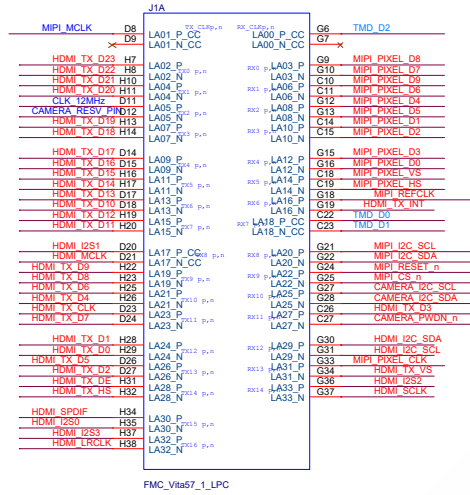
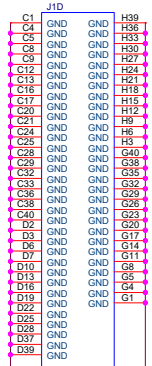
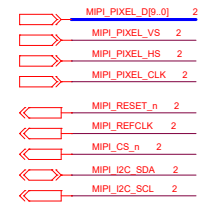
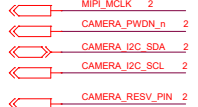


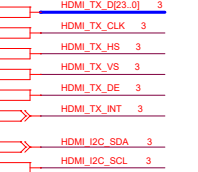
MIPI Bridge Device Interface



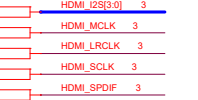
MIPI Camera Control Interface



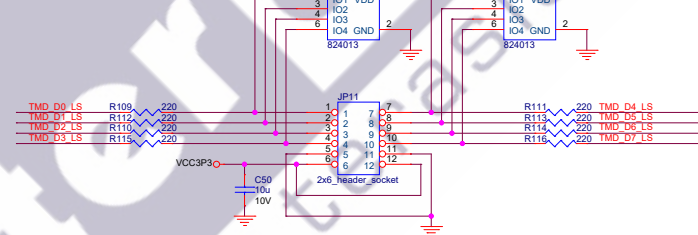
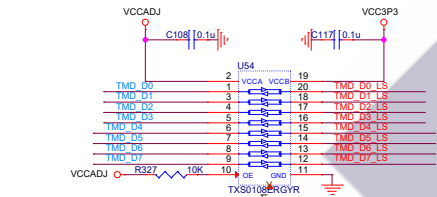
HDMI TX



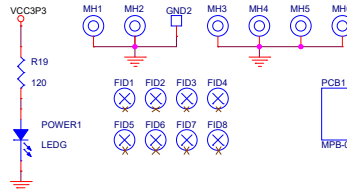
HDMI Audio Interface



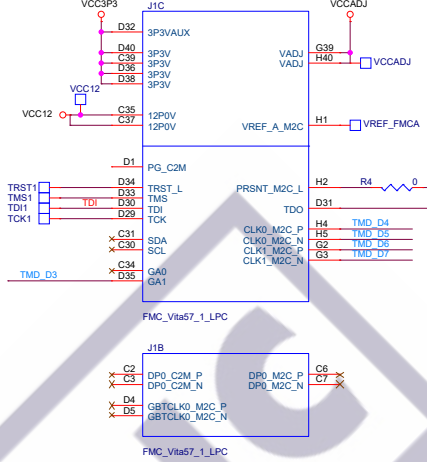
CLK 12MHz



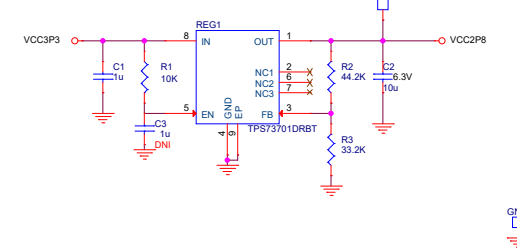
Layout: Place on bottom corners of board



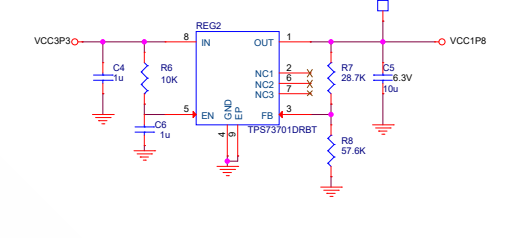
VCCADJ Voltage : 3.3 3.0 2.5V 1.8V



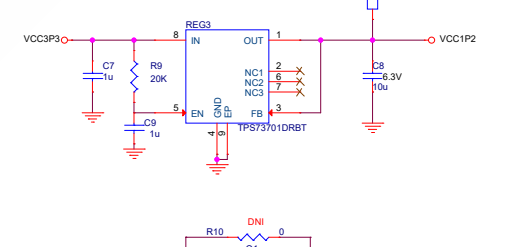
2.8V / 1A



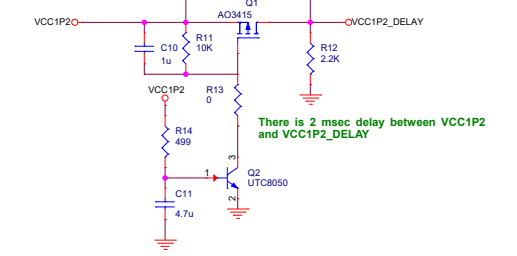
1.8V / 1A



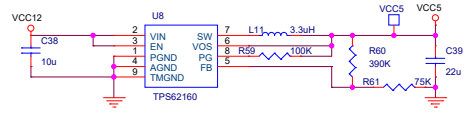
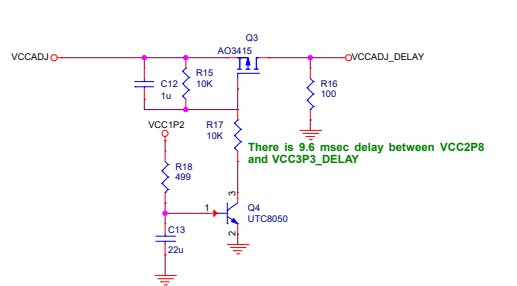
1.2V / 1A



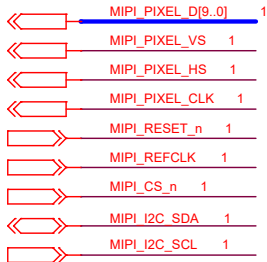
There is 2 msec delay between VCC1P2 and VCC1P2_DELAY



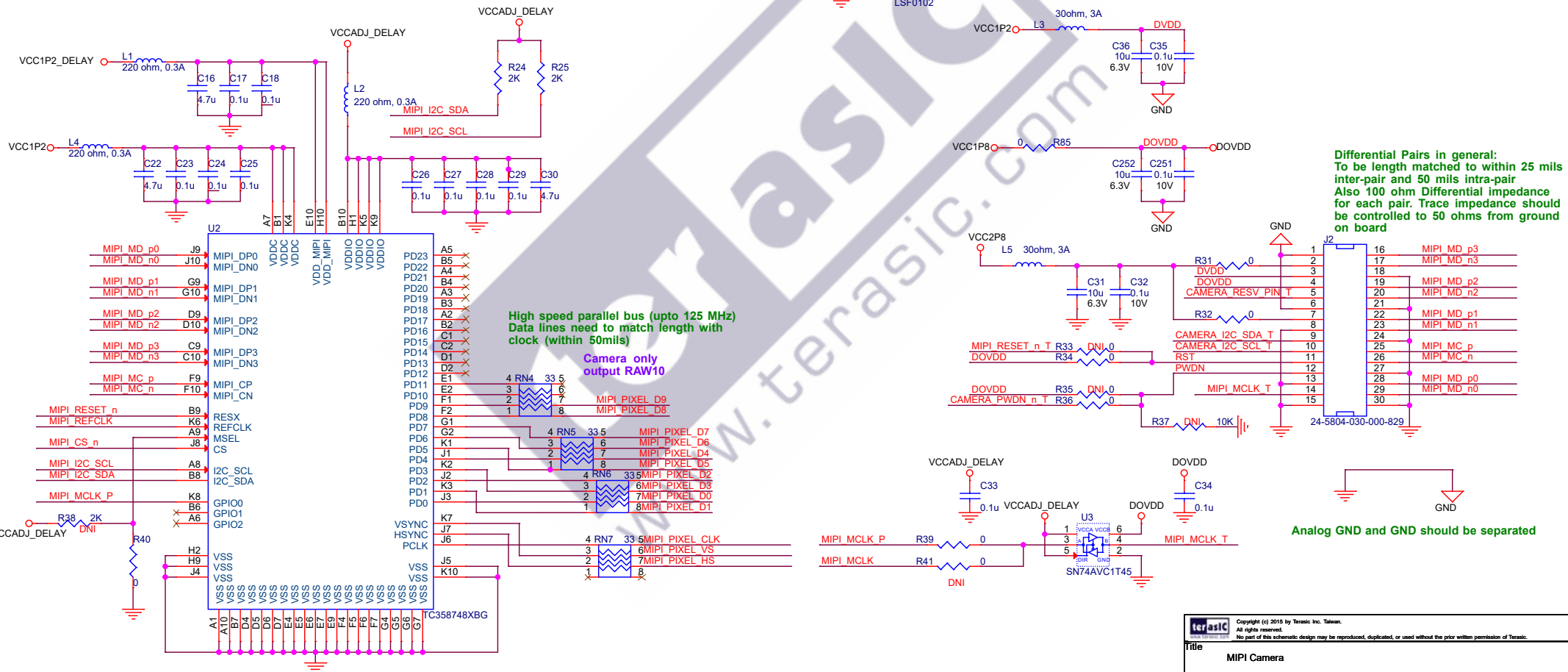
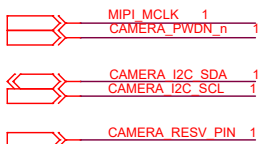
There is 9.6 msec delay between VCC2P8 and VCC3P3_DELAY



MIPI Bridge Device Interface



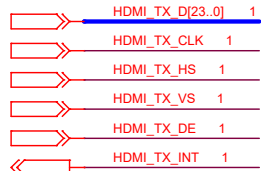
MIPI Camera Control Interface



Differential Pairs in general:
To be length matched to within 25 mils inter-pair and 50 mils intra-pair
Also 100 ohm Differential impedance for each pair. Trace impedance should be controlled to 50 ohms from ground on board

Analog GND and GND should be separated

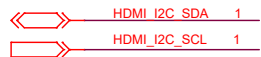
HDMI TX



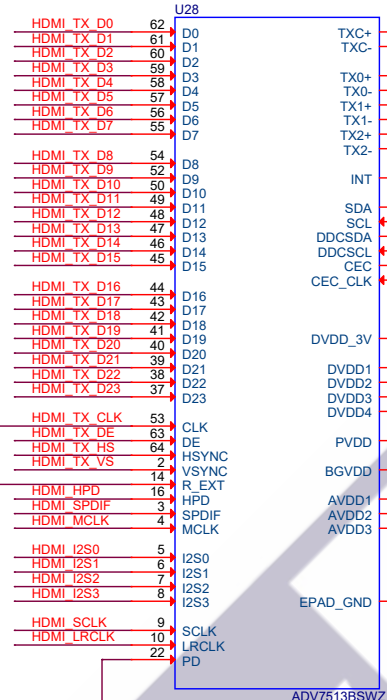
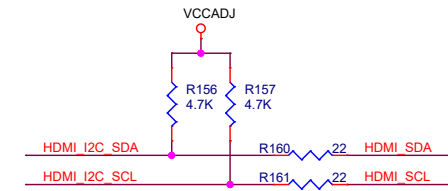
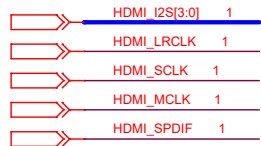
CLK 12MHz



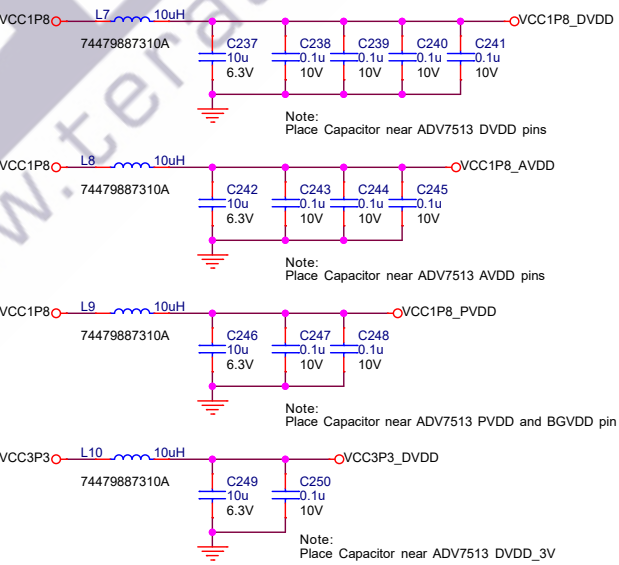
I2C Interface



HDMI Audio Interface



Default :
I2C Address 0x72/0x73



HDMI TX

